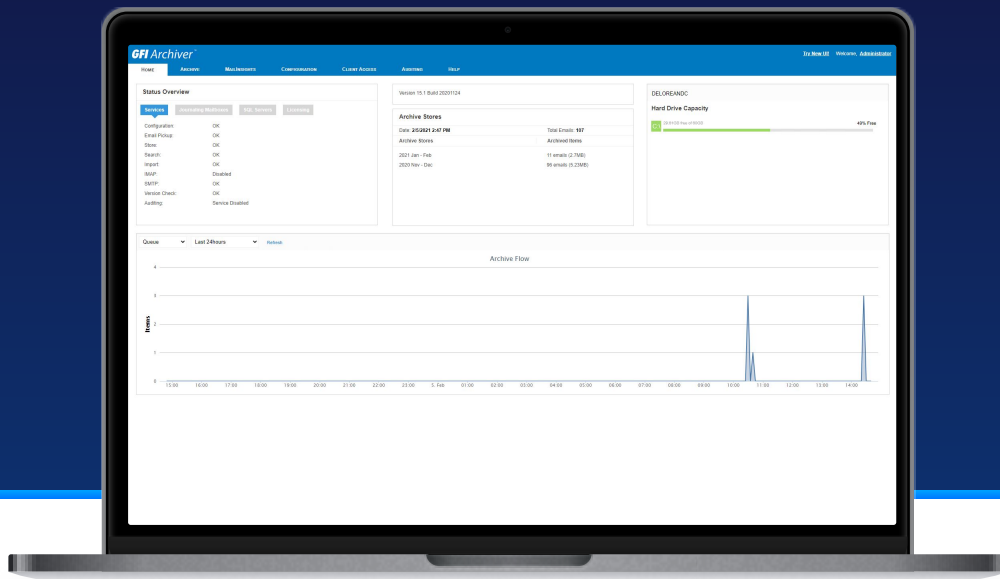


GFI Archiver



Save email server space and enable easy file retrieval for compliance

Companies and organizations must secure, store and retrieve electronic communications for legal and compliance regulations. GFI Archiver makes this business requirement easy-to-manage and easy-to-use. Take control of your email and other digital communications storage with GFI Archiver.

- ✓ **Secure archiving for compliance and management**—GFI Archiver lets you manage and access your organization's electronic communications history: emails, attachments, files, calendar entries, faxes, plus SMS (text) and voice messages connected and logged via email.
- ✓ **Minimize legal risk**—Archive emails and files in their original state in a central, tamper-proof store. This archive helps with compliance, ediscovery and internal investigations while not relying on vulnerable online storage.
- ✓ **Easily access and search your electronic history**—Email history and old file versions are always available for quick retrieval via the GFI Archiver interface, either desktop or mobile. Messages, attachments and files are automatically indexed before they are archived, enabling you to search and retrieve faster.
- ✓ **Improve email performance and save money**—Archive electronic communications separately from the applications to save active server space and improve application performance. GFI Archiver stores a single copy of a multi-recipient email and its attachments, rather than multiple copies of the same email.



Features

Manage more than email

Securely archive emails, files and folders, calendar entries, faxes, SMS and voice messages in one central store. All business communications are stored in their original format, and can be quickly and easily searched and retrieved at any time.

Save on Storage

Automatically archive email into a central store to increase efficiency, improve server performance or reduce reliance on unreliable PST files.

Manage your archive stores automatically, define the roll-over period of each archive store and how often you wish to roll over to a new archive store. GFI Archiver also scales according to your needs. You can use SQL Express plus NTFS if you are a mid-sized organization with a relatively low email volume, affording you further savings on SQL Server licensing costs. Larger organizations with a high volume of emails can opt to store their email archive in SQL.

Single-instance storage (SIS) stores a single copy of a multi-recipient email and its attachments, rather than multiple copies of the same email. In addition, you get even more storage savings as it compresses (and decompresses) email attachments in real time, which makes better use of your storage resources.

Compliance and eDiscovery

Companies can set up archiving rules and retention policies to categorize emails, and ensure they are stored for the required period of time. The solution also includes audit-trail functionality that monitors database and user activity, enabling companies to prove that archived emails have not been altered.

Advanced search features

GFI Archiver automatically indexes every message, attachment, and file before it is saved. This means users can easily find and retrieve lost or deleted emails and faxes again. Users can build complex search rules based on date, sender, recipient and keywords.

Archiving options

Administrators can define archiving rules based on sender, recipient, keywords or a combination of the three criteria. This feature provides flexibility to the administrator who wants automatic archiving but also wants to control which emails get archived. Administrators also have the option to delete archived emails, if required.

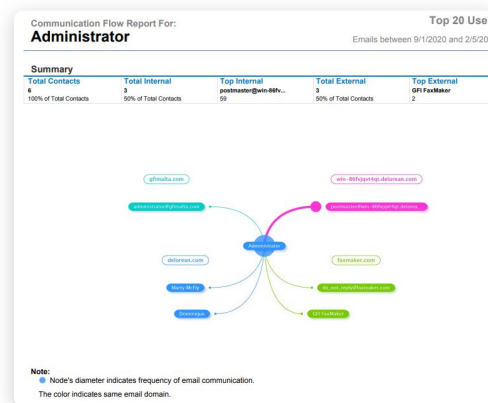
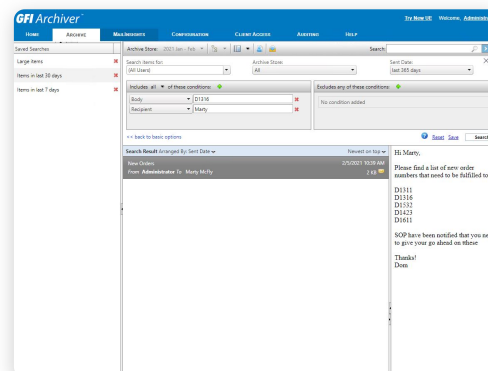
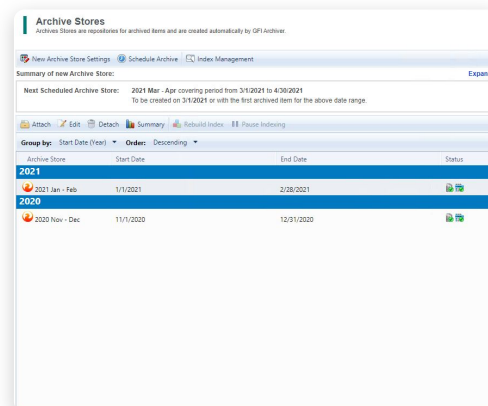
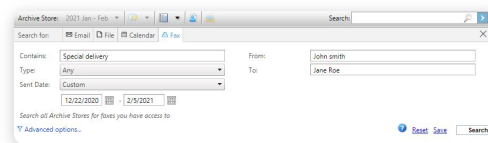
Office 365™, Google Apps™, Exchange and others

Whether you are running Office 365, Google Apps for business or Microsoft Exchange Server 2010 up to the most recent, GFI Archiver works alongside, providing businesses with additional archiving benefits, including improved email search, enhanced compliance and valuable business intelligence reports.

GFI Archiver also supports other email servers such as Kerio Connect, or servers that support a journaling feature. If this is not possible, and Outlook is used in the organization, then companies can still use the File Archiving Assistant to archive directly from Outlook.

Calendar archiving

GFI Archiver enables you to archive calendar items that contain important meeting information. Historical calendar items are visible from a calendar view in the GFI Archiver user interface.



Try free for 30 days