



**Fax.  
Anytime.  
Anywhere.**

### *Save time, reduce costs with GFI FaxMaker*

GFI FaxMaker® is a leading fax server that makes sending and receiving faxes a simple, secure and cost-effective process. It solves the problems associated with manual faxing. GFI FaxMaker allows users to receive and send faxes directly from their email or applications.

With thousands of customers and numerous awards, GFI FaxMaker has been serving business's fax needs for over 10 years, offering reliability and enterprise functionality at highly competitive pricing. The benefits are numerous: less time is spent sending, collecting and distributing faxes, noticeable cost savings and each fax received or sent is saved in digital format as an email or file.

Serving business's fax needs **for over 10 years**

**Thousands** of customers

**Competitive** pricing

**Excellent** performance

## **BENEFITS**

- » Excellent price-performance ratio and immediate return on investment (ROI)
- » Email-to-fax and fax-to-email through most on premises or cloud-based email servers, such as Microsoft Exchange 2000, 2003, 2007, 2010, Office 365™, Lotus Domino, MDAemon, Gmail™
- » Use existing phone lines, use fax over IP, or connect to online fax services for hybrid faxing
- » Automate faxing from line of business applications: If you can print it, you can fax it
- » Fax from email, multifunction devices, applications and mobile devices
- » Eliminate need for multiple distributed fax machines
- » Easy to use and configure



**GFI FaxMaker™**

Network fax server software for Exchange/SMTP/Lotus

## No burden on the administrator

GFI FaxMaker is easy to install, requires little maintenance and integrates with existing messaging clients, applications, and customized solutions.

## Seamless integration with existing business processes

GFI FaxMaker integrates with your on premises or cloud-based mail server, allowing users to send and receive faxes and SMS/text messages using their email client. No printing, walking to a fax machine, dialing numbers, and waiting for the fax to be sent. No more piles of faxes on a fax machine begging to be misplaced, misfiled, dropped on the floor and lost or read by unauthorized personnel. The company can also search for and back up all faxes in the same way as emails are stored and retrieved on the network or to file folders. The OCR module allows users to search keywords or phrases for fast retrieval of faxes from their email client or email archive solutions.

## Supports Microsoft Exchange, Lotus Domino, other SMTP servers and cloud-based email solutions

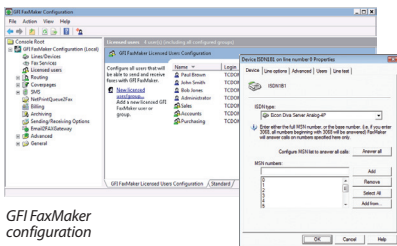
GFI FaxMaker integrates with Exchange Server 2000/2003/2007/2010 and 2012 via a standard Exchange SMTP connector. This makes GFI FaxMaker scalable and indifferent to new Exchange service packs and versions. GFI FaxMaker can be installed on the email server or on a separate machine, in which case no software has to be installed on the email server itself. GFI FaxMaker also integrates with Lotus Domino other popular SMTP servers and cloud-based email solutions such as Office 365 and Gmail.

## Hybrid faxing

Hybrid faxing allows you to use GFI FaxMaker with select online fax services, giving you all the enterprise functionality of an on premises fax server combined with the technical simplicity of cloud-based fax services: No phone lines, modems, fax boards or PABX integration needed - just GFI FaxMaker, an account with a supported service and an Internet connection and you can be faxing in minutes. As no fax hardware is required, you can enjoy lower upfront costs. GFI FaxMaker can be installed in virtual environments, saving you physical space and power consumption on top of all the other cost and efficiency benefits of using a network fax server solution.

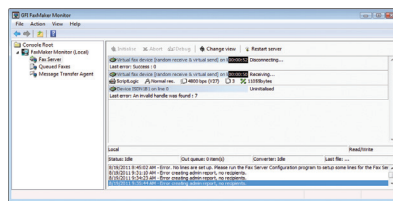
## Fax over IP (FoIP)

FoIP enables you to easily send faxes over your IP infrastructure. GFI FaxMaker integrates with your existing IP-enabled PBX or T.38 capable VoIP service provider to offer FoIP without any additional hardware requirements. GFI FaxMaker's FoIP may also be used to implement least cost routing (LCR); resulting in a cost-effective reduction in international calls dialed (calls are translated into a local call at the recipient's country).



GFI FaxMaker configuration

Supports Brooktrout and ISDN fax cards and modems



The GFI FaxMaker server monitor

The XCAPI FoIP solution from TE-SYSTEMS is integrated within GFI FaxMaker 2013. Additionally, one channel of XCAPI FoIP will be provided for free for one year with every GFI FaxMaker license purchase.



GFI FaxMaker also supports the Dialogic SR140 FoIP solution. Customers can evaluate both SR140 and SR140-L for 30 days without requiring a demo license.



## Automated fax delivery/inbound fax routing

GFI FaxMaker can automatically route incoming faxes to the user's mailbox or to a particular printer based on a DID/DDI/DTMF number, the line on which the fax was received on or optionally, by OCR search terms. Faxes can also be forwarded to a public folder or assigned to a network printer per installed fax port.

## Supports leading multifunction devices (MFD)

GFI FaxMaker 2013, through integration with Nuance eCopy ShareScan SDK, now supports a selection of multifunction devices from Canon, HP, Konica Minolta, Ricoh and Xerox. MFDs can now send faxes from the same system as users and applications, eliminating the need for multiple phone lines to many devices and allowing central logging, archiving and retrieval of all faxes in one place.

## Active Directory integration reduces administration

GFI FaxMaker for Exchange/SMTP/Lotus was designed from the ground up to minimize its administration. It integrates with Active Directory and therefore does not require the administration of a separate fax user database. User-related settings can be applied to Windows users or groups directly.

## Other features:

- » SMS/texting gateway allows users to send and receive SMS/text messages from their desktop
- » Archive faxes to GFI MailArchiver®, to SQL, or another archiving solution
- » OCR modules converts fax to text for fast search and retrieval and easier data entry
- » Assists with HIPAA compliance
- » Supports Outlook contacts
- » Multiply the value of GFI FaxMaker with powerful reporting through the integrated ReportPack
- » Supports multiple mail servers and clustering
- » Native ISDN support
- » And much more!

## System requirements

- » A Windows 2003/2008/2012 server machine with at least 1GB of RAM and 2GHz processor
- » Support FoIP software or device AND/OR account with a supported online fax service AND/OR professional fax device; for a complete list go to: <http://kbase.gfi.com/showarticle.asp?id=KBID001220>
- » If you are installing GFI FaxMaker on a separate machine to your email server, the IIS SMTP service will need to be installed.

Download your free trial from <http://www.gfi.com/faxmaker>



## Contact us

### Malta

Tel: +356 2205 2000  
Fax: +356 2138 2419  
sales@gfi.com

### UK

Tel: + 44 (0)870 770 5370  
Fax: + 44 (0)870 770 5377  
sales@gfi.co.uk

### USA

Tel: +1 (888) 243-4329  
Fax: +1 (919) 379-3402  
ussales@gfi.com

### Asia Pacific - South Australia

Tel: +61 8 8273 3000  
Fax: +61 8 8273 3099  
sales@gfiap.com

For more GFI offices please visit <http://www.gfi.com/company/contact.html>

# GFI FaxMaker™

Network fax server software for Exchange/SMTP/Lotus